

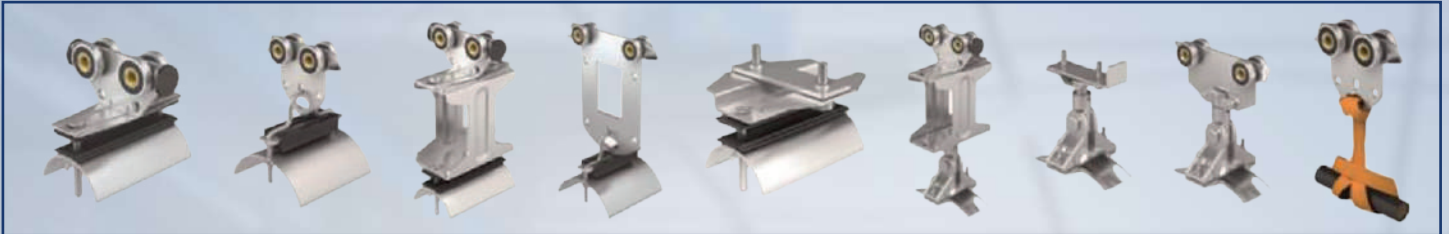
# FESTOON SYSTEMS



***C30 / C32***  
***C40 / C63***



## ACCESSORIES FOR C32 CABLE TROLLEYS



## ACCESSORIES FOR C32 FESTON



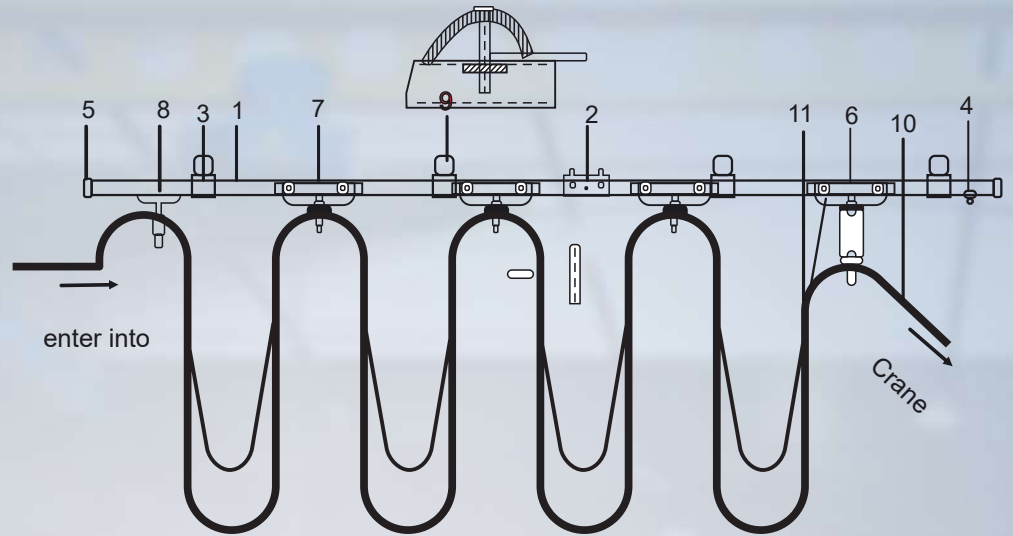
## ACCESSORIES FOR C40 CABLE TROLLEYS



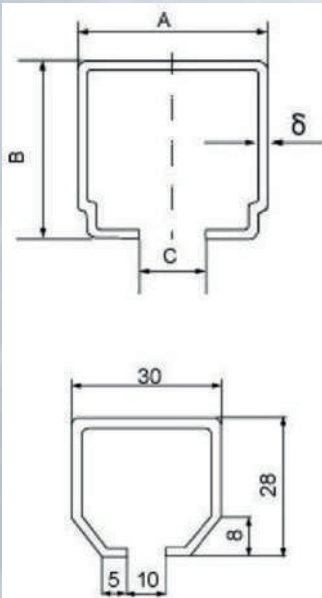
## ACCESSORIES FOR C63 CABLE TROLLEYS



- 1.- C-Track
- 2.- Joint
- 3.- Hanger
- 4.- End stop
- 5.- End cap
- 6.- Towing Trolley
- 7.- Middle Trolley
- 8.- End Trolley
- 9.- Bracket Support
10. Cable



## C-TRACK



Type	C32*30*1.5	C40*40*2.0	C63*63*4.0	C30*28*1.5
Cat.-No	710116*	720116*	750116*	700116*
Material	Galvanized steel			
Weight Kg/m	1.19	2.00	5.98	1.03
TECHNICAL DATA				
A	32	40	63	30
B	30	40	63	28
C	12	13	18	10
delta	1.5	2.0	4.0	1.5
Spacing	Max. Cable Load			
1.5m	89kg	188kg	503kg	70kg
2.0m	51kg	103kg	425kg	36kg
2.5m	39kg	73kg	302kg	22kg
3.0m	23kg	49kg	195kg	-
4.0m	-	28kg	85kg	-

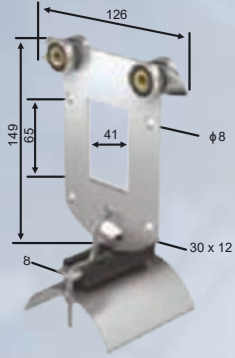
Standard Length:4.0m or 6.0m,other lengths on quest.

## GENERAL

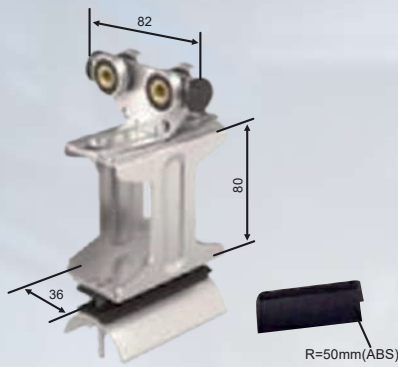
Festoon Systems support conductor cables (flat or round) and hoses (hydraulic and pneumatic application for delivering power & control to mobile equipment in a safe, efficient and maintenance free method. The cable trolleys are well guided inside their C-Tracks and protected against humidity, dust and icing. Cable trolleys not only deliver power and control to mobile equipment which has reciprocal motion but also support large quantities of data cables including optic fibres traveling independently from the mobile machinery. The relevant control carriers with and without push button lifting are also shown in this catalogue.

## Towing Trolley

**C32SC-75**

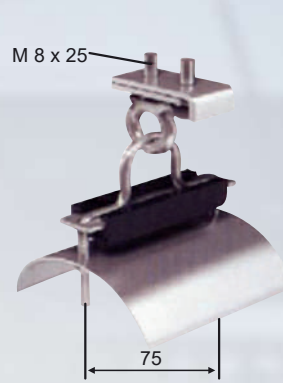


**C32SC-70**

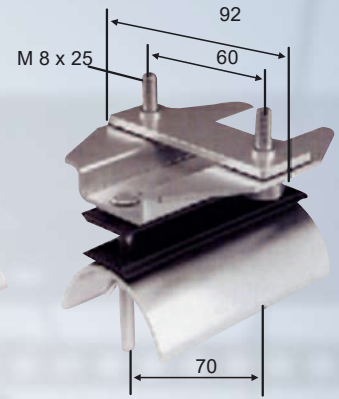


## End Trolley (C32)

**C32EC-75\***



**C32EC-70**

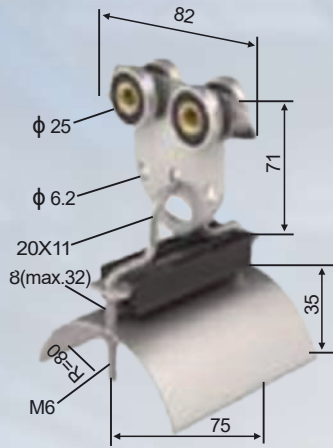


It can be used for C32/C40 C-Track.

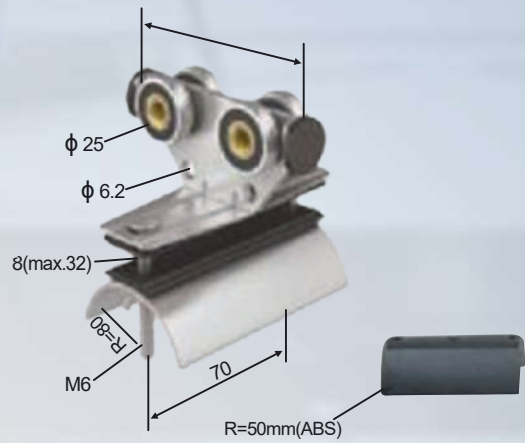
Type	C32SC-75/C32SC-70	C32EC-75/C32EC-70
Wheels	Ball bearings, hardened, galvanized Temperature resistance Lub.grease of wheels: -30C to +125C Traveling speed: ca.160m/min.	
Wheels	Carrier body: steel, galvanized Support saddle: steel, galvanized Bumper: Neoprene Dowel: Brass Hardware: galvanized Temperature resistance: -30C to +100C	
Max. Cable load	Max.25kg per carrier	Max.25kg per carrier
Dim.of Cable (mm)	Max.75W *32δ/Max.70W *32δ	Max.75W *32δ/Max.70W *32δ
Weight(kg)	0.61/0.59	0.39/0.32
Cat.-NO.	711101/711105 711102(R=50,ABS)	711301/711305 711302(R=50,ABS)

## Middle Trolley C32

**C30MC - 60**



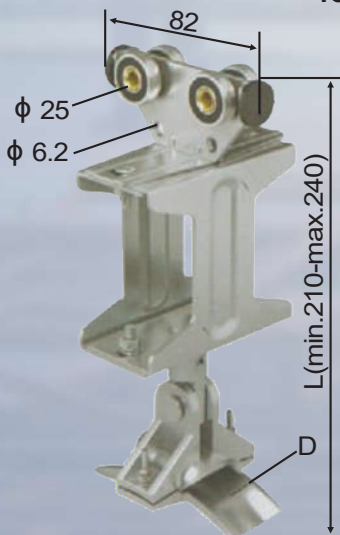
**C30SC - 60**



TYPE	C32MC-75	C32MC-70
Wheels	Ball bearings, hardened, galvanized Temperature resistance Lub.grease of wheels: -30C to +125C Traveling speed: c a.160m/min.	
Material	Carrier body: steel, galvanized Support saddle: steel, galvanized Bumper: Neoprene Dowel: Brass Hardware: galvanized Temperature resistance: -30C to +100C	
Max. Cable load	Max.25k g per carrier	Max.25k g per carrier
Dim.of Cable (mm)	Max.75W*328	Max.75W*328
Weight(kg)	0.415	0.295
Cat.-NO.	711101      711102(R=50,ABS)	711205

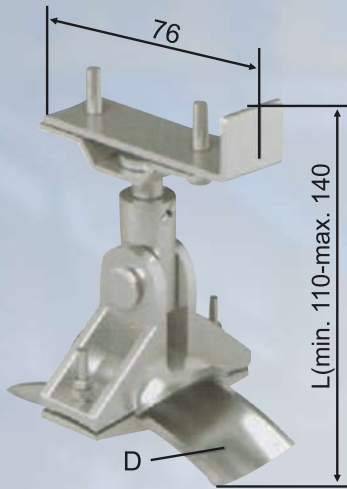
## Middle Trolley C32

**Towing Trolley C32RST**



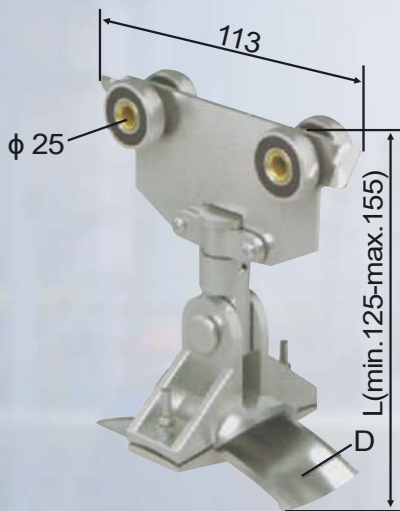
TYPE	C32RS T-30	C32RS T-40
Wheels	Ball bearings, hardened, galvanized Temperature resistance Lub. grease of wheels: -30C to +125C Traveling speed: c a.120m/min.	
Material	Carrier body: steel, galvanized Support saddle: galvanized steel or Aluminum Dowel: Brass or steel, galvanized Hardware: galvanized Temperature resistance: -30C to +125C	
Max. cable load	Max.20k g per carrier	Max.25k g per carrier
Dim. of cable	Max. D= 30mm	Max. D= 40mm
Weight(kg)	0.73	0.75
Cat.-No.	711130	711140

## End trolley C32RET



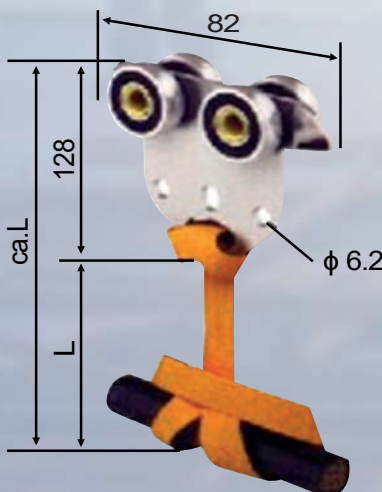
Type	C32RET -30	C32RET -40
Material	Carrier body: steel, galvanized Support saddle: galvanized steel or Aluminum Dowel: Brass or steel, galvanized Hardware: galvanized Temperature resistance: -30°C to +125°C	
Max. cable load	Max.20k g per c arrier	Max.25k gper c arrier
Dim. of cable	Max. D=φ30mm	Max. D= φ40mm
Weight(kg)	0.27	0.29
Cat.-No.	711330	711340

## Middle Trolley C32RMT



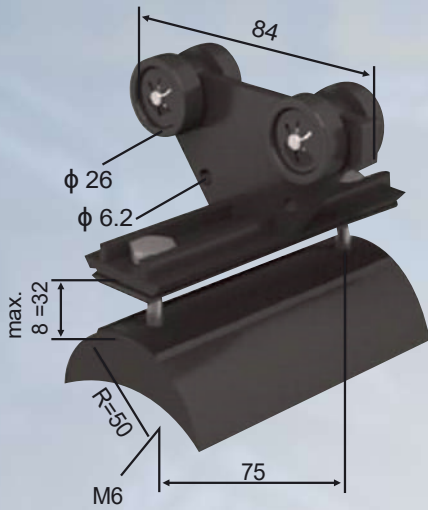
Type	C32RMT -30	C32RMT -40
Wheels	Ball bearings, hardened, galvanized Temperature resistance Lub. grease of wheels: -30°C to +125°C Traveling speed: ca.120m/min.	
Material	Carrier body: steel, galvanized Support saddle: galvanized steel or Aluminum Dowel: Brass or steel, galvanized Hardware: galvanized Temperature resistance: -30°C to +125°C	
Max. cable load	Max.20k g per c arrier	Max.25k g per c arrier
Dim. of cable	Max. D=φ30mm	Max. D= φ40mm
Weight (kg)	0.36	0.38
Cat.-No.	711230	711240

## Middle Trolley C32RMT



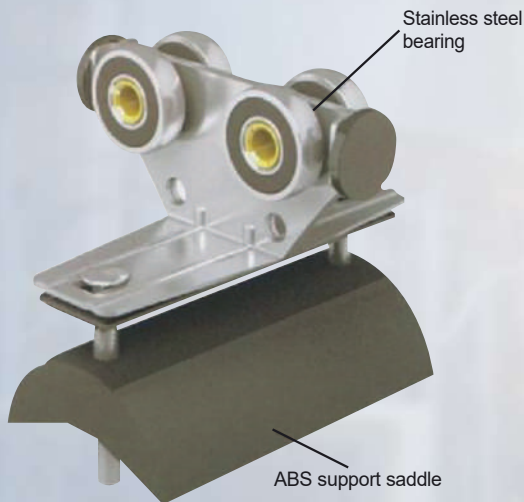
Type	C32RMC
Wheels	Ball bearings, hardened, galvanized Temperature resistance Lub. grease of wheels: -30°C to +125°C Traveling speed: ca.160m/min.
Material	Carrier body: steel, galvanized Support saddle: steel, galvanized Bumper: Nylon Dowel: Brass Hardware: galvanized
Max. cable load	Max.22k g per c arrier
Dim. of Cable(mm)	Max. d=50mm/D=80mm/D=160mm
(Weightkg)	0.29
Cat.-NO.	711206 (D=50, L=160)711208 (D=80, L=190) 711210 (D=60, L=270)

## Plastic Middle Trolley



Type	C32PMC-70
Wheels	Wheels:nylon Temperature resistance Lub.grease: -30 C to+80 C Traveling speed: c a.120m/min.
Material	Carrier body: ABS Support Saddle:ABS Bumper:Neoprene Dowel: steel, galvanized Hardware: galvanized Temperature: resistance:-30 C to+80 C
Max.cable load	Max 8k g per c carrier
Dim.of Cable(mm)	Max.70W×328
Weight(kg)	0.14
Cat.-No.	711215

## Anti-explosion trolley

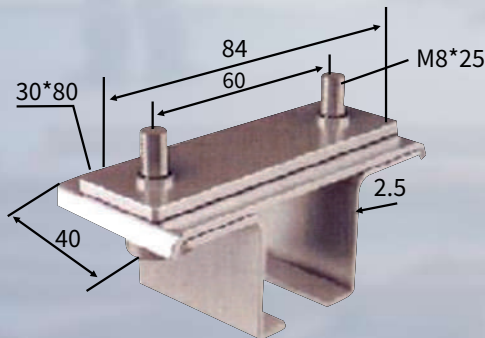


The main different from Anti-explosion trolley and normal C-track trolley is the touch material, for example, C-Track is steel, and the bearing is must be stainless steel or plastic, and the support saddle is also made by stainless steel or plastic.

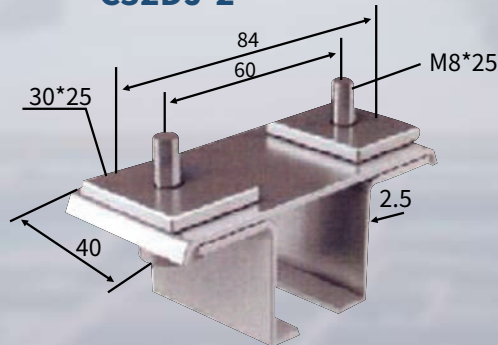
Type	Cat.-No.
C32AMC-70	711208
C32ASC-70	711108
C40AMC-70	721208
C40ASC-70	721108

## Hanger C32DJ

### C32DJ-1



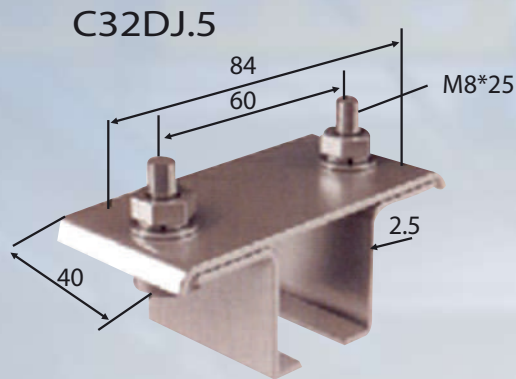
### C32DJ-2



Type	Weight(kg)	Material	Order-No.
C32DJ-1	0.218	Galvanized	714101
C32DJ-2	0.223	Galvanized	714101

## Hanger C32DJ

For C-Track Support Bracket

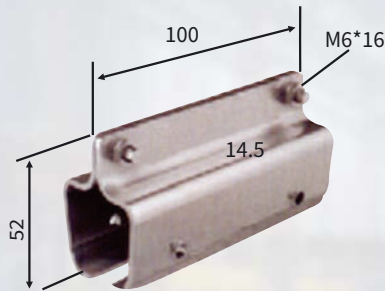
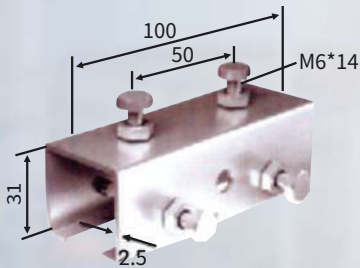


ready installed

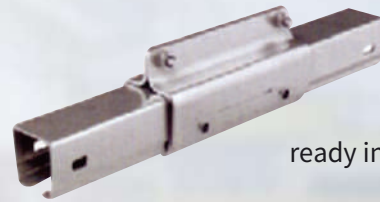
Type	Weight(kg)	Material	Order-No.
C32DJ-1	0.196	Galvanized	714105

## Joint Clamp C32JT

C32JT-1



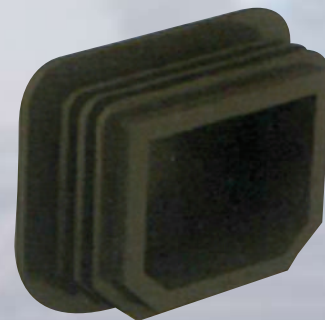
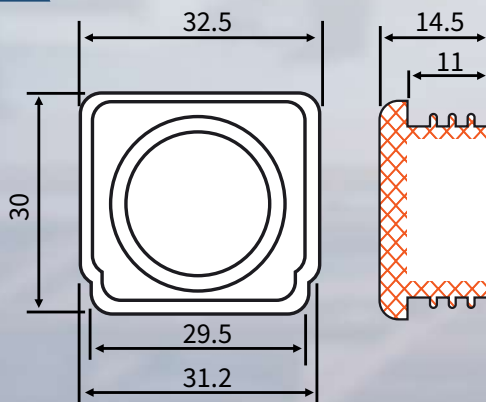
C32JT-2



ready installed

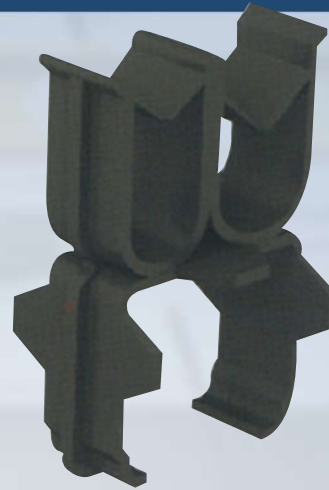
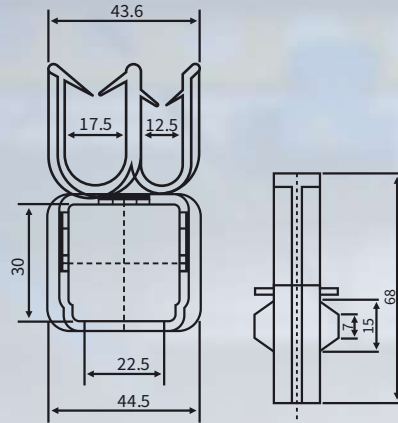
Type	Weight(kg)	Material	Order-No.
C32JT-1	0.284	Galvanized steel	713401
C32JT-2	0.265	Galvanized steel	713402

## Cap C32DM



Type	Weight(kg)	Material	Order-No.
C32DM	0.01	Plastic	713708

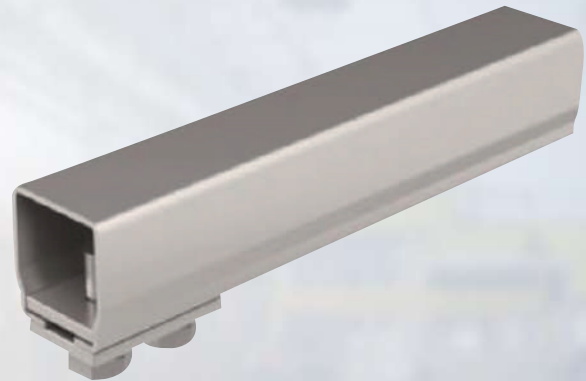
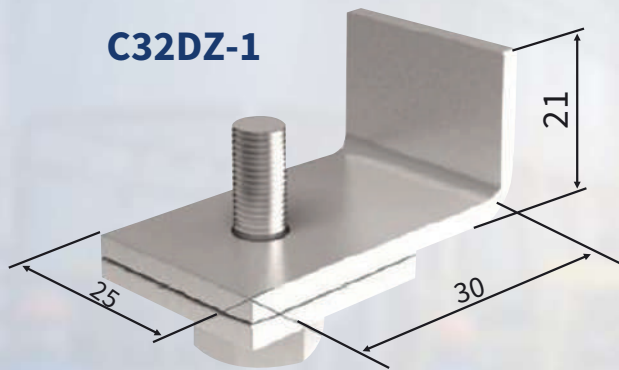
## Cable clip C32XK



Type	Weight(kg)	Material	Order-No.
C32XK	0.022	Plastic	713718

## End Stop C32DZ

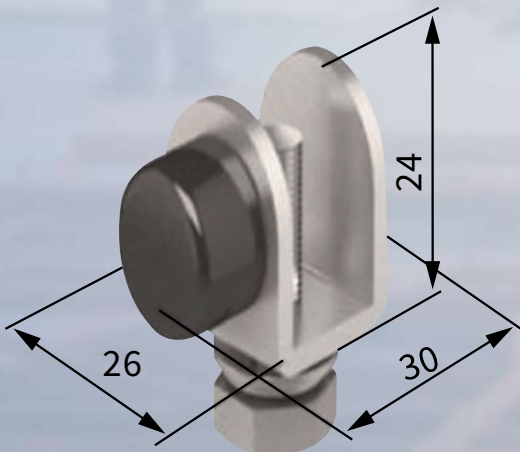
Could be used for C32/C40 C- Track



Type	Weight(kg)	Material	Order-No.
C32DZ	0.05	Galvanized	713702

## Bumper End Stop C32BDZ

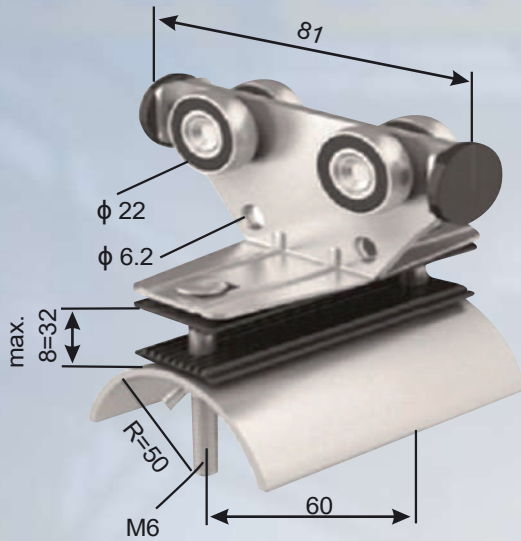
Could be used for C32/40 C-



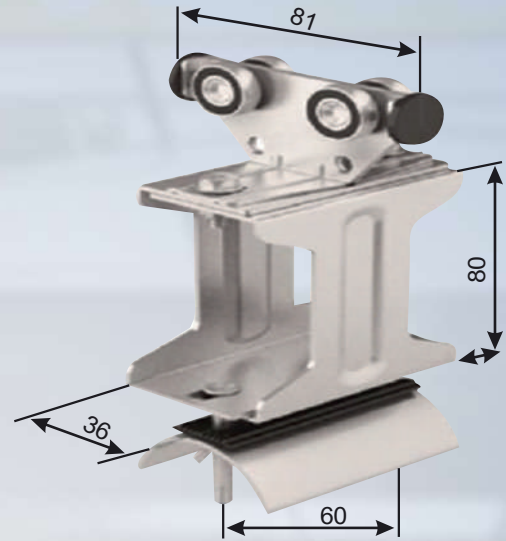
Ready installed

Type	Weight(kg)	Material	Order-No.
C32DZ	0.05	Galvanized	713702

## Middle Trolley (C30)

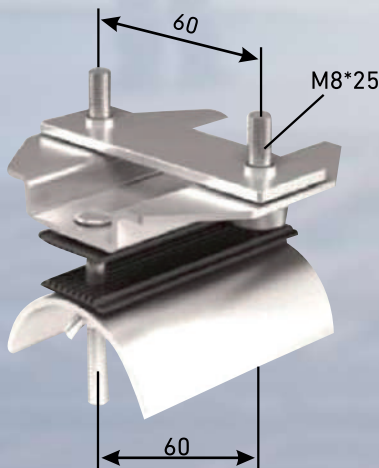


## Towing Trolley (C30)



Type	C30MC-60	C30SC-60
Wheels	Ball bearings, hardened, galvanized Temperature resistance Lub.grease of wheels: -30C to +125C Traveling speed: c a.120m/min.	
Material	Carrier body: steel, galvanized Support saddle: steel, galvanized Bumper: Neoprene Dowel: steel, galvanized Hardware: galvanized Temperature resistance: -30C to +100C	
Max. Cable load	Max.20k g per carrier	Max.20k g per carrier
Dim.of Cable (mm)	Max.60W*328	Max.60W*328
Weight(kg)	0.28	0.53
Cat.-NO.	701201 711102(R=50,ABS)	701101

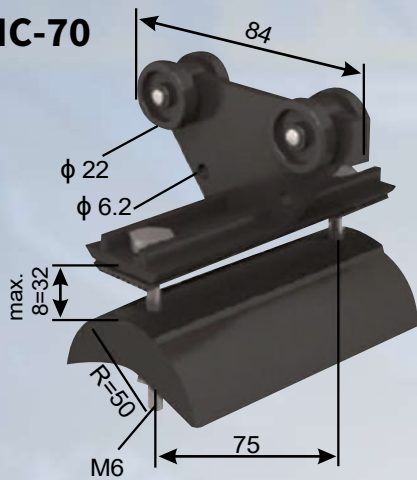
## End Trolley (C30) C30EC-60



Type	C30EC-60
Material	Carrier body: steel, galvanized Support Saddle: steel, galvanized Dowel: steel, galvanized Hardware: galvanized
Max. Cable load	Max. 20k g per carrier
Dim. of cable (mm)	Max. 60W*328
Weight (kg)	0.30
Cat.-NO.	701301

## Plastic Middle Trolley

### C30PMC-70

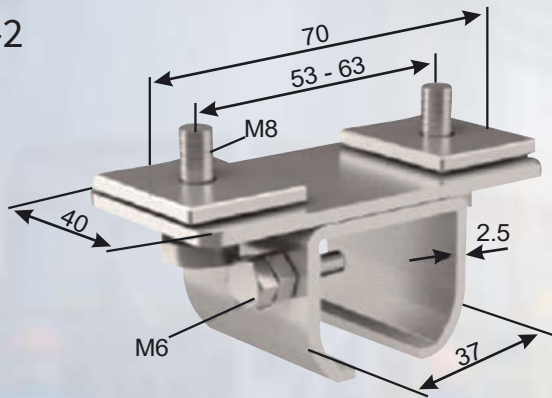


Type	C30PMC-70
Wheels	Wheels:nylon Temperature resistance Lub.grease:-30 °Cto+80°C Traveling speed:c a.120m/min.
Material	Carrier body: ABS Support Saddle: ABS Bumper: Neoprene Dowel: steel, galvanized Hardware: galvanized Temperature: resistance:-30°Cto+80°C
Max. cable load	Max 8k g per c arrier
Dim. of Cable(mm)	Max.70W×328
Weight(kg)	0.13
Cat.-No.	701215

## Hanger C30D J

for C-Track Support Br acket

### C30D J-2

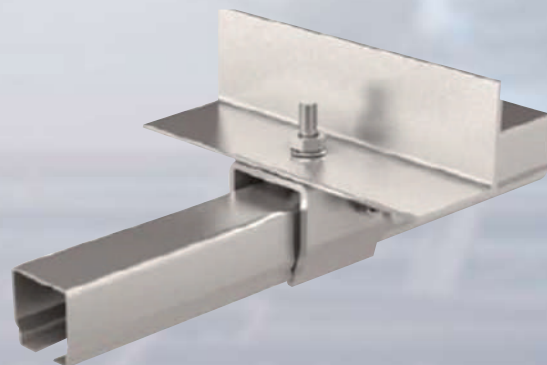
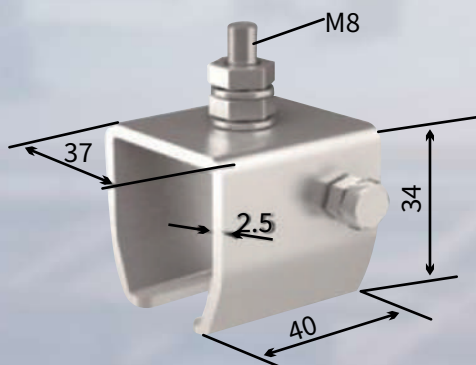


Type	Weight(kg)	Material	Order-No.
C30D J-2	0.21	Galvanized steel	704102

## C30 Hanger C30D J

for C-Track Support Br acket

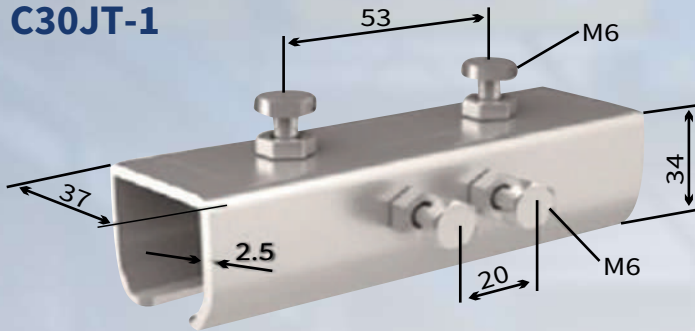
### C30DJ-5



Type	Weight(kg)	Material	Order-No.
C30DJ-5	0.15	Galvanized steel	704105

## Joint Clamp C30JT

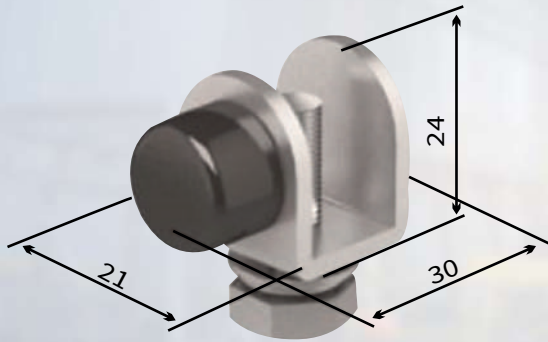
**C30JT-1**



Ready installed

Type	Weight(kg)	Material	Order-No.
C30JT-1	0.28	Galvanized steel	703401

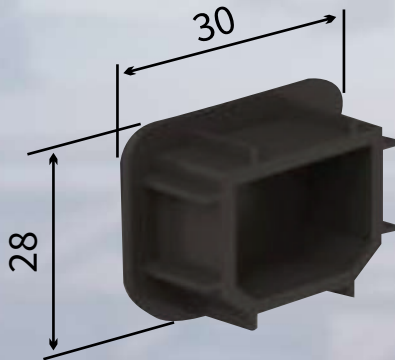
## Bumper End Stop C30BDZ



Ready installed

Type	Weight(kg)	Material	Order-No.
C30BDZ	0.05	Galvanized steel	703705

## End Cap C30DM

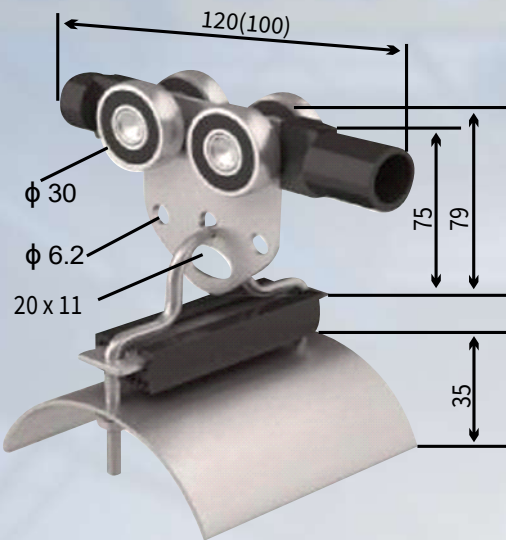


Ready installed

Type	Weight(kg)	Material	Order-No.
C30DM	0.005	Plastic	703701

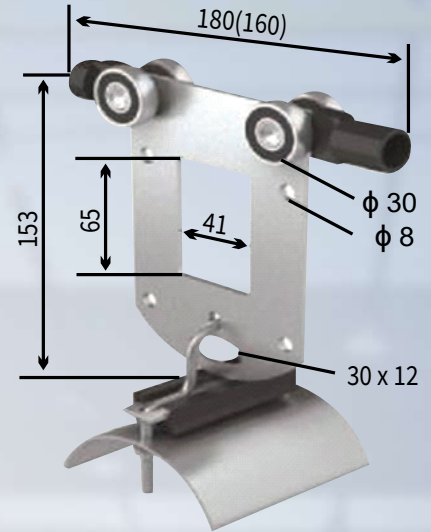
## Middle Trolley (C40)

C40MC



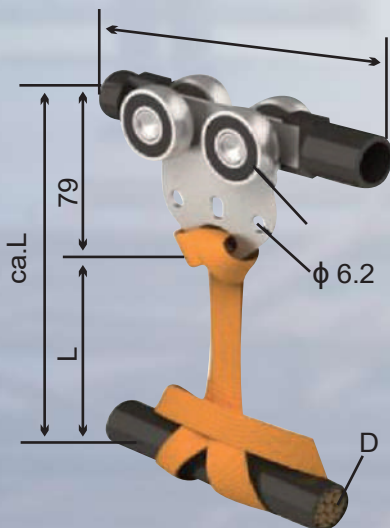
## Towing Trolley (C30)

C40SC



Type	C40MC	C40SC
Wheels	Ball bearings, hardened, galvanized Temperature resistance Lub.grease of wheels: -30 C to +125 C Traveling speed: c a.160m/min.	
Material	Carrier body: steel, galvanized Support saddle: steel, galvanized or ABS Bumper: Neoprene Dowel: steel, galvanized Hardware: galvanized Temperature resistance: -30 C to +100 C(80 C, saddle ABS)	
Max. Cable load	Max.35k g per c carrier	Max.35k g per c carrier
Dim.of Cable (mm)	Max.75W*328	Max.75W*328
Weight(kg)	0.52	0.65
Cat.-NO.	721201, 7121202(R=50,ABS)	721101,721102(r=50,ABS)

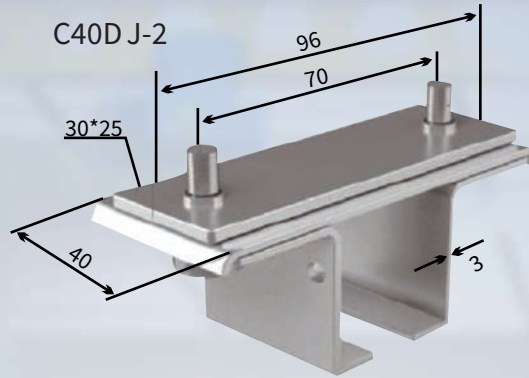
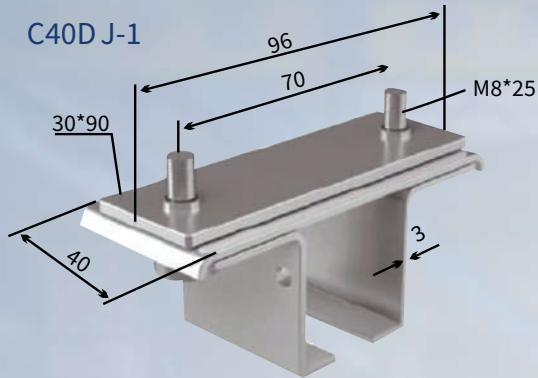
## Trolley for Round Cable



Type	C40RMC
Wheels	Ball bearings, hardened, galvanized Temperature resistance Lub.grease of wheels: -30 C to +125 C Traveling speed: c a.100m/min.
Material	Carrier body: steel, galvanized Sling :Nylon Dowel: steel, galvanized Hardware: galvanized
Max. Cable load	Max.28k g per c carrier
Dim. of cable (mm)	Max. d=50mm/D=80mm/D=160mm
Weight (kg)	0.29
Cat.-NO.	722206 (D=50, L=160) 722208 (D=80, L=190) 722210 (D=160, L=270)

## Hanger C40DJ

### C-Track Support Bracket

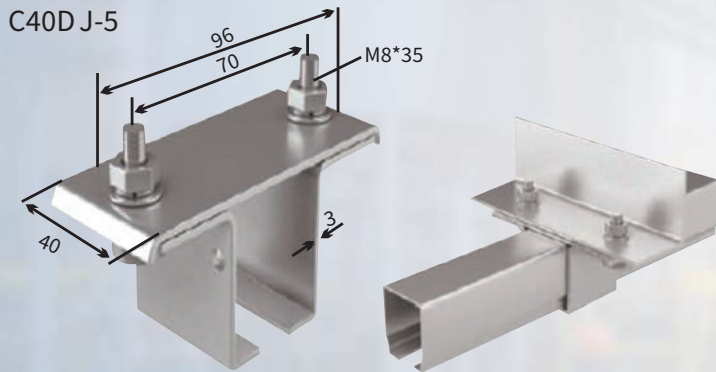


Ready installed

Type	Weight(kg)	Material	Order-No.
C40D J-1	0.30	Galvanized steel	724101
C40D J-2	0.28	Galvanized steel	724102

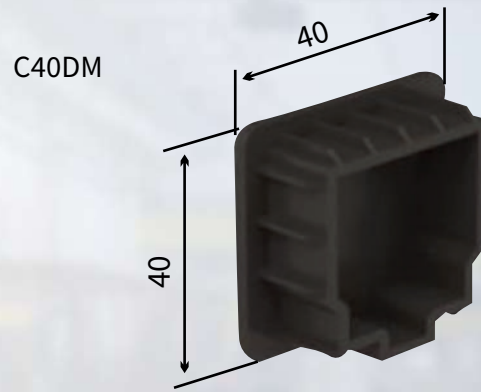
## Hanger C40DJ

### For Angle steel Support Bracket



Type	Weight(kg)	Material	Order-No.
C30DM	0.005	Galvanized steel	703701

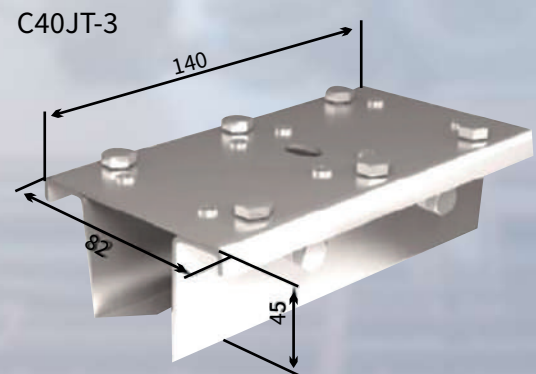
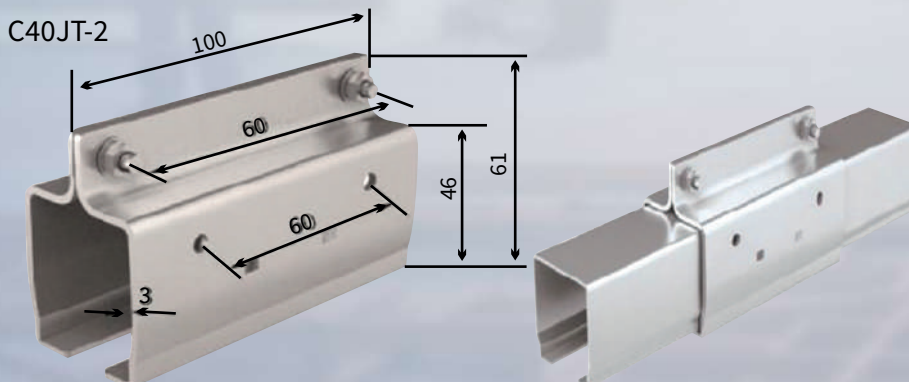
## End Cap C40DM



Type	Weight(kg)	Material	Order-No.
C40DM	0.01	Plastic	723701

## C40 Joint Clamp C40JT

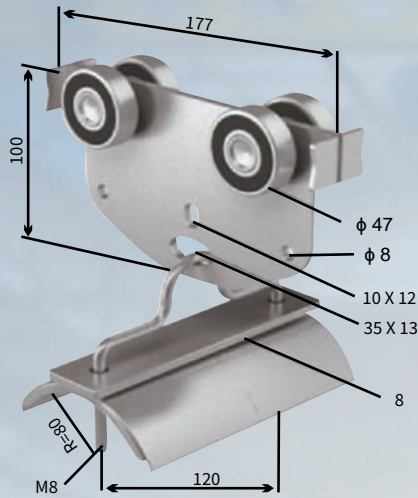
### C-Track Support Bracket



Type	Weight(kg)	Material	Order-No.
C40JT-2	0.32	Galvanized steel	723402
C40JT-3	0.45	Galvanized steel	723403

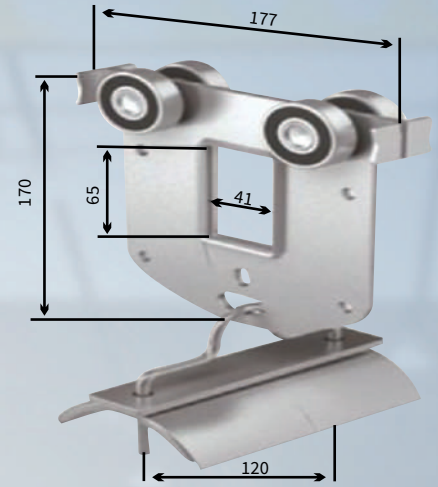
## Middle Trolley (C63)

C63MC



## Towing Trolley (C63)

C63SC



Type	C63MC	C63SC
Wheels	Ball bearings,har dened,galvanized Temperature resistance Lub.grease of wheels: -30C to +125C	Traveling speed: c a.160m/min.
Material	Carrier body: steel, galvanized Support saddle: steel, galvanized Dowel: steel, galvanized Hardware: galvanized Temperature resistance: -30C to +100C	
Max. Cable load	Max.65k g per c arrier	Max.65k g per c arrier
Dim.of Cable (mm)	Max.120W*408	Max.120W*408
Weight(kg)	0.52	2.30
Cat.-NO.	751201	751101

## End Trolley (C63)

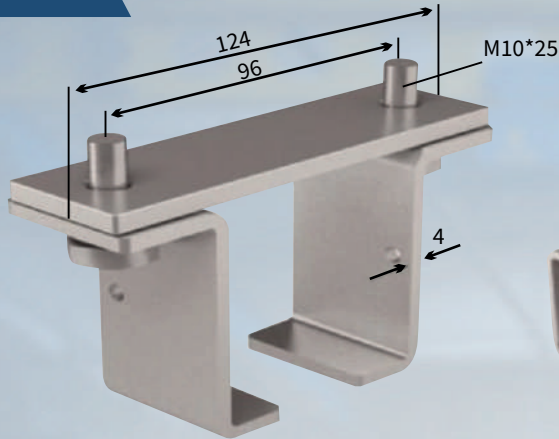
C63EC



Type	C63EC
Material	steel, galvanized
Max. cable load	Max.65k g per c arrier
Dim. of Cable(mm)	Max.120W*408
Weight(kg)	1.15
Cat.-NO.	751301

## Hanger C63DJ

C63DJ

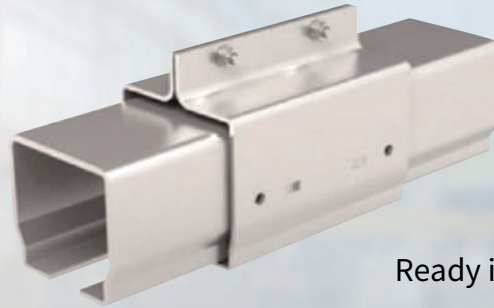
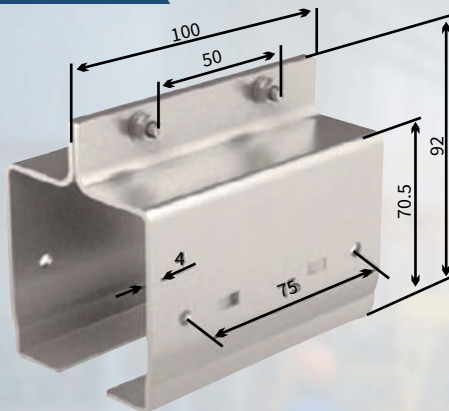


Ready installed

Type	Weight(kg)	Material	Order-No.
C63DJ	0.45	Galvanized steel	754102

## Joint Clamp C63JT

C63JT

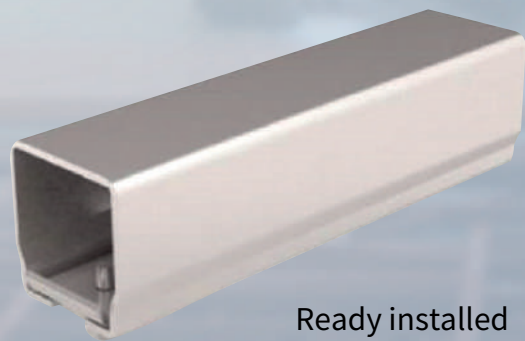
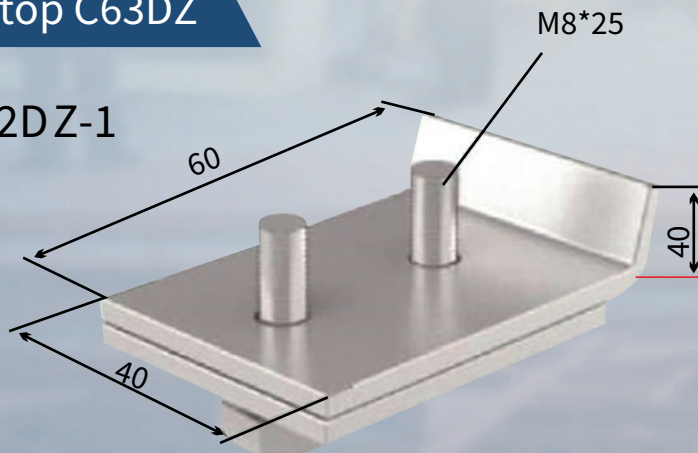


Ready installed

Type	Weight(kg)	Material	Order-No.
C63JT	0.72	Galvanized steel	753402

## End Stop C63DZ

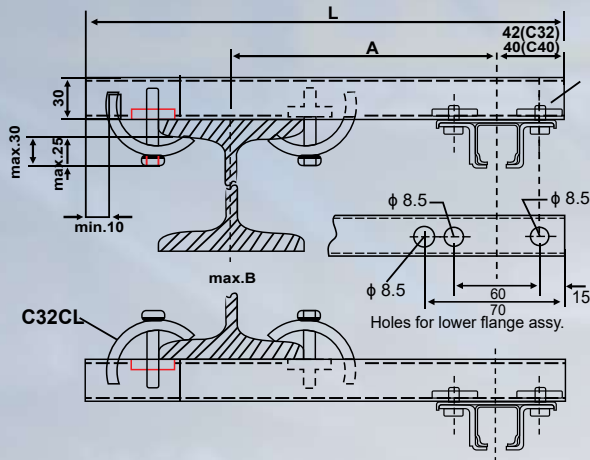
C32DZ-1



Ready installed

Type	Weight(kg)	Material	Order-No.
C63DZ	0.25	Galvanized steel	753702

## Ready installed on C-Track Bracket (for split)



C32CL/Support Attachment C32 CL Pls see Page 110

## C-Track

Choose Dim. A per local requirements and make sure that hoist wheels have enough clearance.

Dim. 70mm is C40 Track Hanger.

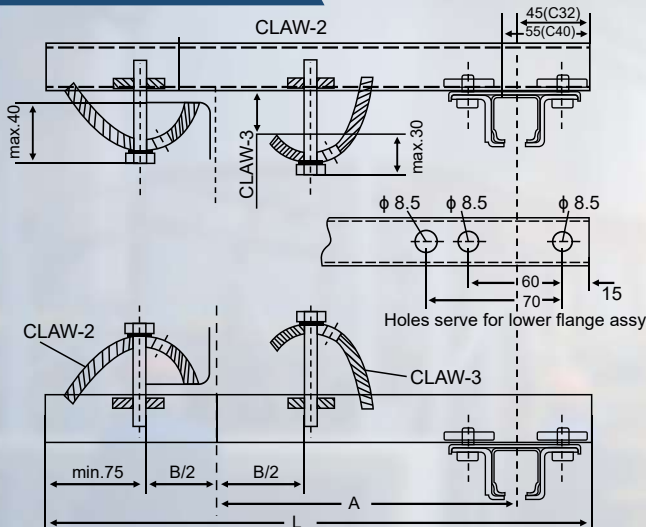
Select next larger size bracket when your I-Beam dim.

B is more than 210mm and refer to heavy duty brackets.

## Standard Bracket

Type	Material	A mm	L mm	Max. B mm	Cat.-No.
Ha200	Galvanized steel	200	400	210	714151
HA300		300	500	210	714152
HA400		400	600	210	714153
HA500		500	700	210	714154

## Upper Flange Assy

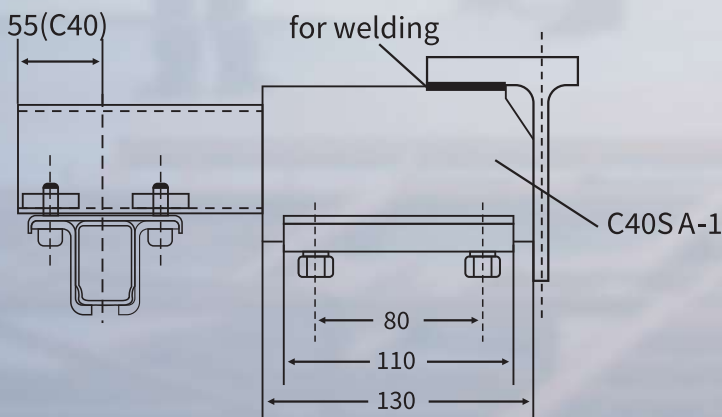


The track sections are provided with borings to fix the support hangers at the bottom flange of the track profile.

## Heavy duty Bracket

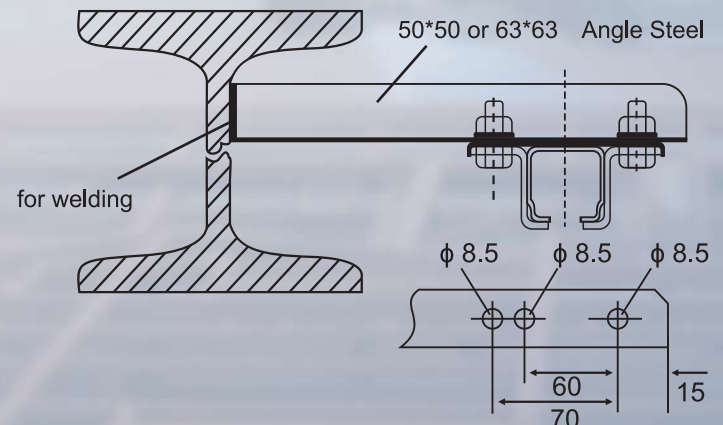
Type	Material	L mm	Cat.-No.
HL400	Galvanized steel	400	724161
HL500		500	724162
HL600		600	724163
HL700		700	724144
HL800		800	724165
HL900		900	724166
HL1000		1000	724167
HL1100		1100	724168
HL1200		1200	724169

## Bracket (for welding)



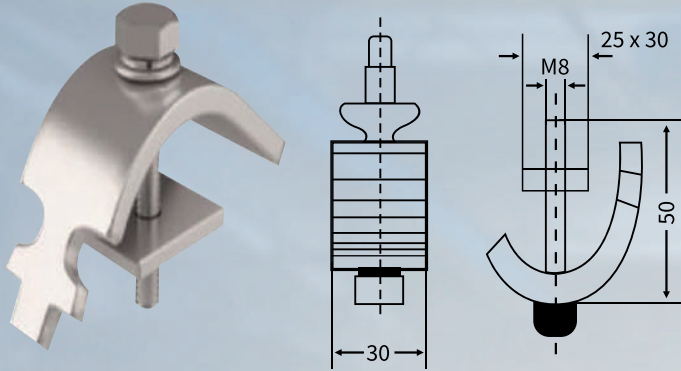
Support Attachment C32CL Pls see next page

## Angle steel Bracket (for welding) C-Track



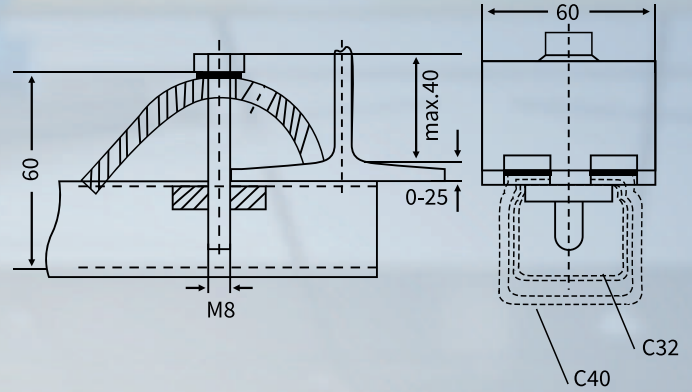
## Claw (C32/C40)

C32CL-1



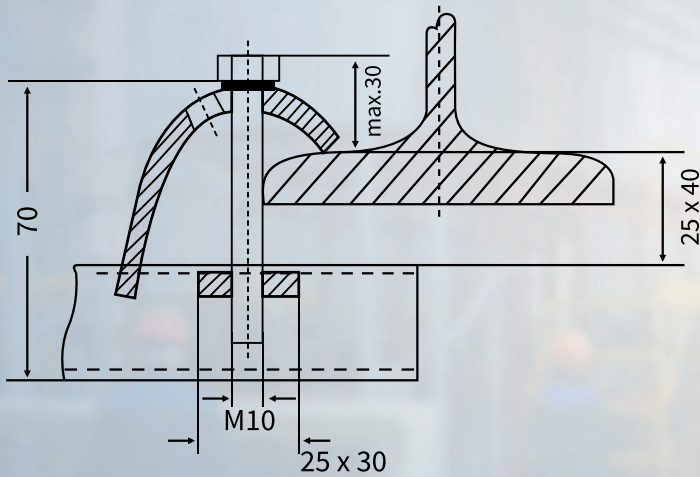
Be used for Standard Bracket

C40CL-1



Be used for Heavy duty Bracket

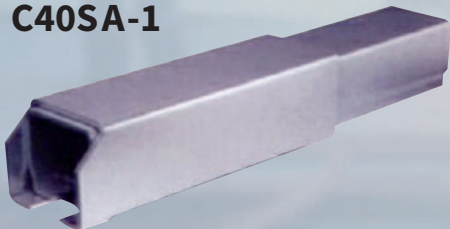
## C40CL-2



Type	Weight kg	Material	Cat.-No.
C32CL -1	0.202	Galvanized steel	714180
C40CL -1	0.281		714181
C40CL -2	0.285		724182
C63CL -3	0.515		754185

## Support Attachment (C40)

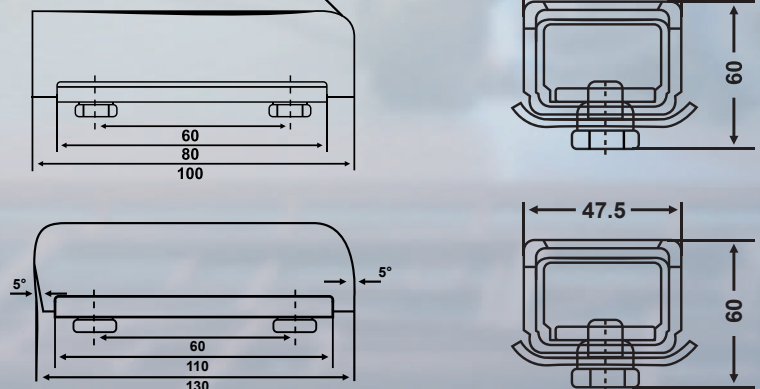
C40SA-1



C40SA-2



For Welding



Type	Weight kg	Material	Cat.-No.
C40SA - 1	0.936	Galvanized steel	714191
C40SA - 2	0.951		714192